

NORTHERN TERRITORY OF AUSTRALIA

Regulations 1980, No. 51*

By-Laws under the Ports Act

In pursuance of the powers conferred upon it by the Ports Act, the Northern Territory Port Authority at a meeting held on the 10th day of December, 1980, made the following By-laws.

Dated this 10th day of December, 1980.

PAUL A. WARMAN
General Manager

AMENDMENTS OF THE PORT BY-LAWS

1. REPEAL AND SUBSTITUTION OF BY-LAW 5

The Port By-laws are amended by omitting by-law 5 and substituting the following by-law:

"5. ANCHORING NEAR WHARF, &c.

"The master or other person in charge of a vessel, lighter or small craft shall not anchor the vessel, lighter or small craft or permit or suffer the vessel, lighter or small craft to be anchored -

(a) within 3 cables of an outside vessel berthed at a wharf;

(b) near or at the approach to a wharf in such a manner as to impede the entry to or the exit from the wharf; or

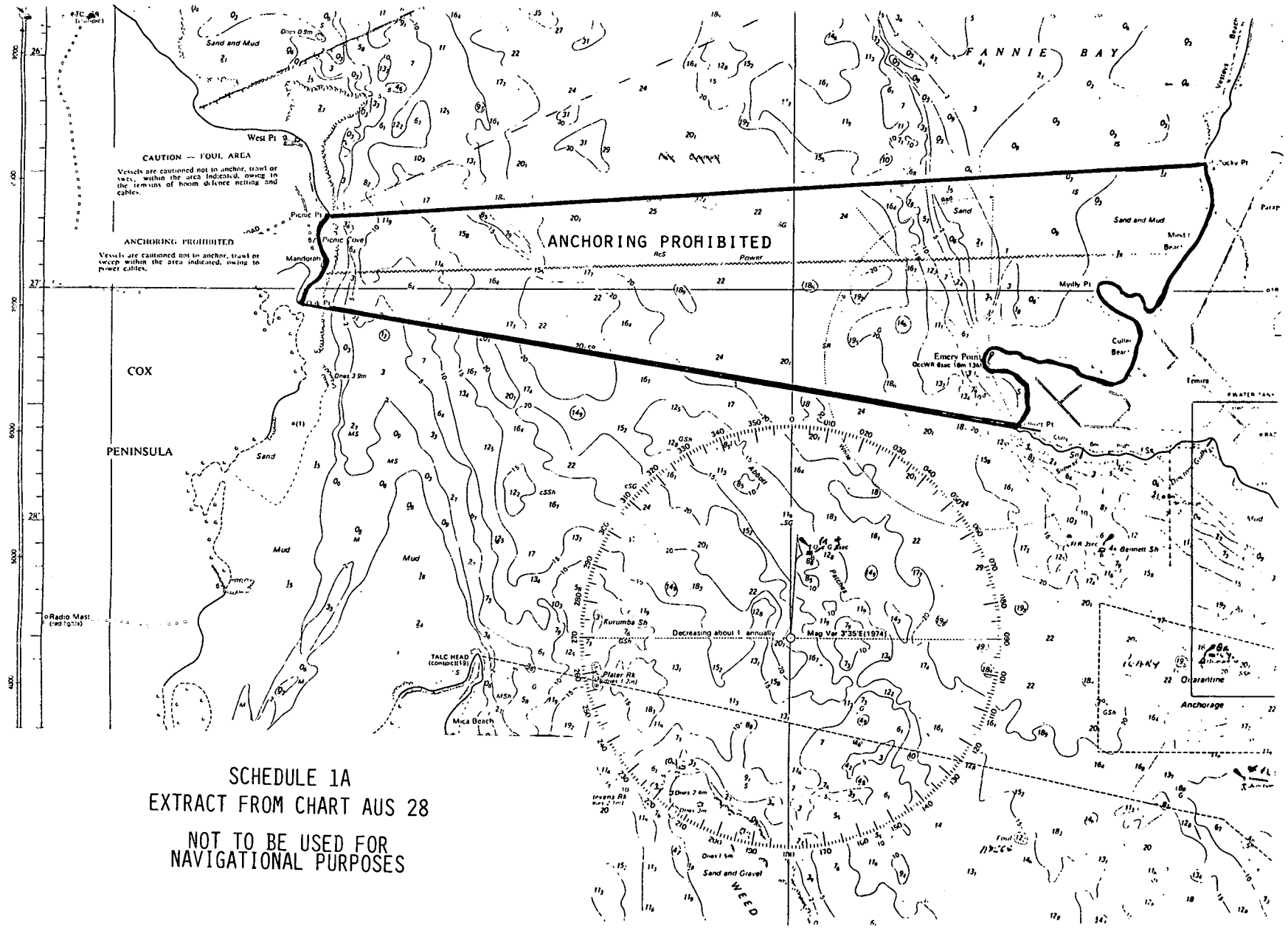
(c) within the area bounded by a line from Picnic Point to Bullocky Point, along the foreshore to Elliot Point thence to Oak Point and along the foreshore to the commencement at Picnic Point as set out in the map forming Schedule 1A, being an extract from Royal Australian Naval Hydrographic Service Chart AUS 28.

Penalty: \$100."

2. NEW SCHEDULE

The Port By-laws are amended by inserting immediately before Schedule 1 the map attached hereto and marked "Schedule 1A".

*Notified in the Northern Territory Government Gazette on 1980.



SCHEDULE 1A
 EXTRACT FROM CHART AUS 28
 NOT TO BE USED FOR
 NAVIGATIONAL PURPOSES