

NORTHERN TERRITORY OF AUSTRALIA
AMENDMENT OF LEGISLATIVE ASSEMBLY (POWERS AND
PRIVILEGES) REGULATIONS

Regulations 2003, No. 1

TABLE OF PROVISIONS

Regulation

New regulations

5. Assembly precincts: on and from 28 April 2003 to and including
2 May 2003
6. Assembly precincts: on and after 3 May 2003



NORTHERN TERRITORY OF AUSTRALIA

Regulations 2003, No. 1

Regulations under the *Legislative Assembly (Powers and Privileges) Act*

I, JOHN CHRISTOPHER ANICTOMATIS, the Administrator of the Northern Territory of Australia, acting with the advice of the Executive Council, make the following regulation under the *Legislative Assembly (Powers and Privileges) Act*.

Dated 31 January 2003.

J. C. ANICTOMATIS
Administrator

By His Honour's Command

K. VATSKALIS
Minister for Transport and Infrastructure
acting for and on behalf of the
Chief Minister

AMENDMENT OF LEGISLATIVE ASSEMBLY (POWERS AND PRIVILEGES) REGULATIONS

New regulations

The *Legislative Assembly (Powers and Privileges) Regulations* are amended by adding at the end the following:

"5. Assembly precincts: on and from 28 April 2003 to and including 2 May 2003

- (1) This regulation comes into operation on 28 April 2003.
- (2) Schedule 2 to the Act is repealed and the following substituted:

'SCHEDULE 2

Section 14

PRECINCTS OF ASSEMBLY

The precincts of the Assembly are –

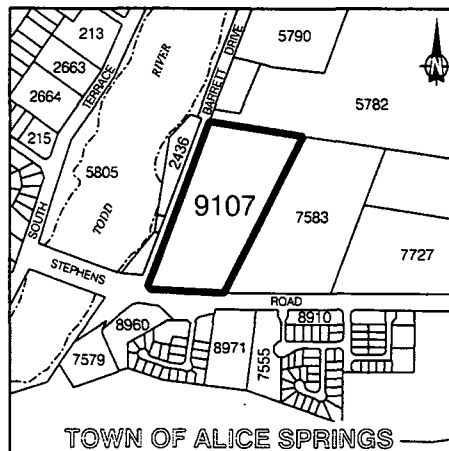
- (a) all that parcel of land in the Town of Darwin, Northern Territory of Australia containing an area of 2.41 hectares more or less and bounded by lines described as follows: Commencing at the westernmost corner of Lot 5949 Town of Darwin; thence by a line bearing 134 degrees 38 minutes 20 seconds for 103.5 metres; a convex curve of arc 166.75 metres, radius 126.4 metres and chord bearing 276 degrees 56 minutes 20 seconds; a line bearing 314 degrees 44 minutes for 102.15 metres; a concave curve of arc 53.905 metres, radius 84 metres and chord bearing 296 degrees 20 minutes 50 seconds; a convex curve of arc 29.175 metres, radius 153 metres and chord bearing 283 degrees 25 minutes 30 seconds; a line bearing 288 degrees 53 minutes for 7 metres; a convex curve of arc 5.975 metres, radius 13.5 metres and chord bearing 301 degrees 34 minutes; a convex curve of arc 9.015 metres, radius 7 metres and chord bearing 351 degrees 8 minutes 40 seconds; a convex curve of arc 14.765 metres, radius 51 metres and chord bearing 36 degrees 20 minutes 20 seconds; a line bearing 44 degrees 38 minutes for 29.7 metres; a convex curve of arc 10.995 metres, radius 7 metres and chord bearing 89 degrees 38 minutes; a line bearing 134 degrees 38 minutes for 21 metres; a line bearing 44 degrees 38 minutes for 10.8 metres; a line bearing 134 degrees 38 minutes for 76.74 metres; a line bearing 44 degrees 38 minutes for 81.1 metres; a line bearing 134 degrees 38 minutes for 18.46 metres; a line bearing 44 degrees 38 minutes for 6.4 metres; a line bearing 134 degrees 34 minutes for 47.17 metres; a line bearing 224 degrees 23 minutes 20 seconds for 6.355 metres; a line bearing 134 degrees 38 minutes for 16.7 metres; a line bearing 224 degrees 38 minutes for 3.195 metres; a line bearing 134

Legislative Assembly (Powers and Privileges) Regulations

degrees 38 minutes for 30.305 metres; a line bearing 224 degrees 37 minutes 10 seconds for 14.405 metres to the point of commencement; and

- (b) all that area of land in the Town of Alice Springs, Northern Territory of Australia in containing an area of 7.96 hectares more or less being Lot 9107 and being more particularly delineated on Survey Plan LTO 98/11 lodged with the Surveyor-General, Darwin and shown bounded by thick black lines on the map in Part B.

Part B



"6. Assembly precincts: on and after 3 May 2003

- (1) This regulation comes into operation on 3 May 2003.
- (2) Schedule 2 to the Act is repealed and the following substituted:

'SCHEDULE 2

Section 14

PRECINCTS OF ASSEMBLY

The precincts of the Assembly are all that parcel of land in the Town of Darwin, Northern Territory of Australia containing an area of 2.41 hectares more or less and bounded by lines described as follows: Commencing at the westernmost corner of Lot 5949 Town of Darwin; thence by a line bearing 134 degrees 38 minutes 20 seconds for 103.5 metres; a convex curve of arc 166.75 metres, radius

Legislative Assembly (Powers and Privileges) Regulations

126.4 metres and chord bearing 276 degrees 56 minutes 20 seconds; a line bearing 314 degrees 44 minutes for 102.15 metres; a concave curve of arc 53.905 metres, radius 84 metres and chord bearing 296 degrees 20 minutes 50 seconds; a convex curve of arc 29.175 metres, radius 153 metres and chord bearing 283 degrees 25 minutes 30 seconds; a line bearing 288 degrees 53 minutes for 7 metres; a convex curve of arc 5.975 metres, radius 13.5 metres and chord bearing 301 degrees 34 minutes; a convex curve of arc 9.015 metres, radius 7 metres and chord bearing 351 degrees 8 minutes 40 seconds; a convex curve of arc 14.765 metres, radius 51 metres and chord bearing 36 degrees 20 minutes 20 seconds; a line bearing 44 degrees 38 minutes for 29.7 metres; a convex curve of arc 10.995 metres, radius 7 metres and chord bearing 89 degrees 38 minutes; a line bearing 134 degrees 38 minutes for 21 metres; a line bearing 44 degrees 38 minutes for 10.8 metres; a line bearing 134 degrees 38 minutes for 76.74 metres; a line bearing 44 degrees 38 minutes for 81.1 metres; a line bearing 134 degrees 38 minutes for 18.46 metres; a line bearing 44 degrees 38 minutes for 6.4 metres; a line bearing 134 degrees 34 minutes for 47.17 metres; a line bearing 224 degrees 23 minutes 20 seconds for 6.355 metres; a line bearing 134 degrees 38 minutes for 16.7 metres; a line bearing 224 degrees 38 minutes for 3.195 metres; a line bearing 134 degrees 38 minutes for 30.305 metres; a line bearing 224 degrees 37 minutes 10 seconds for 14.405 metres to the point of commencement.'".
