

NORTHERN TERRITORY OF AUSTRALIA

LEGISLATIVE ASSEMBLY (POWERS AND PRIVILEGES) REGULATIONS

As in force at 12 February 2003

Table of provisions

1	Citation	1
2	Commencement	1
3	Assembly precincts: 3 to 7 June 2000	1
4	Assembly precincts: on and after 8 June 2000	2
5	Assembly precincts: on and from 28 April 2003 to and including 2 May 2003.....	2
6	Assembly precincts: on and after 3 May 2003	4

ENDNOTES

NORTHERN TERRITORY OF AUSTRALIA

As in force at 12 February 2003

LEGISLATIVE ASSEMBLY (POWERS AND PRIVILEGES) REGULATIONS

Regulations under the *Legislative Assembly (Powers and Privileges) Act*

1 Citation

These Regulations may be cited as the *Legislative Assembly (Powers and Privileges) Regulations*.

2 Commencement

- (1) Regulation 3 comes into operation on 3 June 2000.
- (2) Regulation 4 comes into operation on 8 June 2000.

3 Assembly precincts: 3 to 7 June 2000

Schedule 2 to the Act is repealed and the following substituted:

"Schedule 2

section 14

PRECINCTS OF ASSEMBLY

Part A

All that parcel of land in the Town of Darwin, Northern Territory of Australia containing an area of 4.02 hectares more or less being Lot 7270(A), being more particularly delineated on Survey Plan S2000/182 lodged with the Surveyor-General and shown bounded by thick black lines on the map in Part B.

Part B

".

4 Assembly precincts: on and after 8 June 2000

Schedule 2 to the Act is repealed and the following substituted:

"Schedule 2

section 14

PRECINCTS OF ASSEMBLY

All that parcel of land in the Town of Darwin, Northern Territory of Australia containing an area of 2.41 hectares more or less and bounded by lines described as follows: Commencing at the westernmost corner of Lot 5949 Town of Darwin; thence by a line bearing 134 degrees 38 minutes 20 seconds for 103.5 metres; a convex curve of arc 166.75 metres, radius 126.4 metres and chord bearing 276 degrees 56 minutes 20 seconds; a line bearing 314 degrees 44 minutes for 102.15 metres; a concave curve of arc 53.905 metres, radius 84 metres and chord bearing 296 degrees 20 minutes 50 seconds; a convex curve of arc 29.175 metres, radius 153 metres and chord bearing 283 degrees 25 minutes 30 seconds; a line bearing 288 degrees 53 minutes for 7 metres; a convex curve of arc 5.975 metres, radius 13.5 metres and chord bearing 301 degrees 34 minutes; a convex curve of arc 9.015 metres, radius 7 metres and chord bearing 351 degrees 8 minutes 40 seconds; a convex curve of arc 14.765 metres, radius 51 metres and chord bearing 36 degrees 20 minutes 20 seconds; a line bearing 44 degrees 38 minutes for 29.7 metres; a convex curve of arc 10.995 metres, radius 7 metres and chord bearing 89 degrees 38 minutes; a line bearing 134 degrees 38 minutes for 21 metres; a line bearing 44 degrees 38 minutes for 10.8 metres; a line bearing 134 degrees 38 minutes for 76.74 metres; a line bearing 44 degrees 38 minutes for 81.1 metres; a line bearing 134 degrees 38 minutes for 18.46 metres; a line bearing 44 degrees 38 minutes for 6.4 metres; a line bearing 134 degrees 34 minutes for 47.17 metres; a line bearing 224 degrees 23 minutes 20 seconds for 6.355 metres; a line bearing 134 degrees 38 minutes for 16.7 metres; a line bearing 224 degrees 38 minutes for 3.195 metres; a line bearing 134 degrees 38 minutes for 30.305 metres; a line bearing 224 degrees 37 minutes 10 seconds for 14.405 metres to the point of commencement."

5 Assembly precincts: on and from 28 April 2003 to and including 2 May 2003

- (1) This regulation comes into operation on 28 April 2003.

(2) Schedule 2 to the Act is repealed and the following substituted:

"Schedule 2

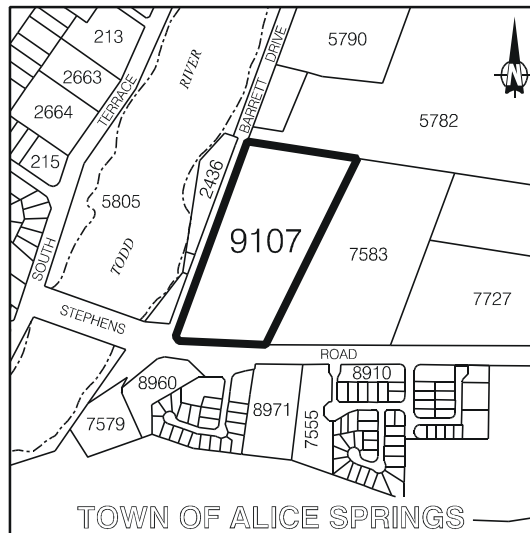
section 14

PRECINCTS OF ASSEMBLY

The precincts of the Assembly are:

- (a) all that parcel of land in the Town of Darwin, Northern Territory of Australia containing an area of 2.41 hectares more or less and bounded by lines described as follows: Commencing at the westernmost corner of Lot 5949 Town of Darwin; thence by a line bearing 134 degrees 38 minutes 20 seconds for 103.5 metres; a convex curve of arc 166.75 metres, radius 126.4 metres and chord bearing 276 degrees 56 minutes 20 seconds; a line bearing 314 degrees 44 minutes for 102.15 metres; a concave curve of arc 53.905 metres, radius 84 metres and chord bearing 296 degrees 20 minutes 50 seconds; a convex curve of arc 29.175 metres, radius 153 metres and chord bearing 283 degrees 25 minutes 30 seconds; a line bearing 288 degrees 53 minutes for 7 metres; a convex curve of arc 5.975 metres, radius 13.5 metres and chord bearing 301 degrees 34 minutes; a convex curve of arc 9.015 metres, radius 7 metres and chord bearing 351 degrees 8 minutes 40 seconds; a convex curve of arc 14.765 metres, radius 51 metres and chord bearing 36 degrees 20 minutes 20 seconds; a line bearing 44 degrees 38 minutes for 29.7 metres; a convex curve of arc 10.995 metres, radius 7 metres and chord bearing 89 degrees 38 minutes; a line bearing 134 degrees 38 minutes for 21 metres; a line bearing 44 degrees 38 minutes for 10.8 metres; a line bearing 134 degrees 38 minutes for 76.74 metres; a line bearing 44 degrees 38 minutes for 81.1 metres; a line bearing 134 degrees 38 minutes for 18.46 metres; a line bearing 44 degrees 38 minutes for 6.4 metres; a line bearing 134 degrees 34 minutes for 47.17 metres; a line bearing 224 degrees 23 minutes 20 seconds for 6.355 metres; a line bearing 134 degrees 38 minutes for 16.7 metres; a line bearing 224 degrees 38 minutes for 3.195 metres; a line bearing 134 degrees 38 minutes for 30.305 metres; a line bearing 224 degrees 37 minutes 10 seconds for 14.405 metres to the point of commencement; and
- (b) all that area of land in the Town of Alice Springs, Northern Territory of Australia in containing an area of 7.96 hectares more or less being Lot 9107 and being more particularly delineated on Survey Plan LTO 98/11 lodged with the Surveyor-General, Darwin and shown bounded by thick black lines on the map in Part B.

Part B



6 Assembly precincts: on and after 3 May 2003

- (1) This regulation comes into operation on 3 May 2003.
- (2) Schedule 2 to the Act is repealed and the following substituted:

"Schedule 2

section 14

PRECINCTS OF ASSEMBLY

The precincts of the Assembly are all that parcel of land in the Town of Darwin, Northern Territory of Australia containing an area of 2.41 hectares more or less and bounded by lines described as follows: Commencing at the westernmost corner of Lot 5949 Town of Darwin; thence by a line bearing 134 degrees 38 minutes 20 seconds for 103.5 metres; a convex curve of arc 166.75 metres, radius 126.4 metres and chord bearing 276 degrees 56 minutes 20 seconds; a line bearing 314 degrees 44 minutes for 102.15 metres; a concave curve of arc 53.905 metres, radius 84 metres and chord bearing 296 degrees 20 minutes 50 seconds; a convex curve of arc 29.175 metres, radius 153 metres and chord bearing 283 degrees 25 minutes 30 seconds; a line bearing 288 degrees 53 minutes for 7 metres; a convex curve of arc 5.975 metres, radius 13.5 metres and chord bearing 301 degrees 34 minutes; a convex curve of arc 9.015 metres, radius 7 metres and chord bearing 351 degrees 8 minutes 40 seconds; a convex curve of arc 14.765 metres, radius 51 metres and chord bearing 36 degrees 20 minutes 20 seconds; a line bearing 44 degrees 38 minutes for 29.7 metres; a convex curve of arc 10.995 metres, radius 7 metres and chord bearing 89 degrees 38 minutes; a line bearing 134 degrees 38 minutes for 21 metres; a line bearing 44 degrees 38 minutes for 10.8 metres; a line bearing 134 degrees 38 minutes for 76.74 metres; a line bearing 44 degrees 38 minutes for 81.1 metres; a line bearing 134 degrees 38 minutes for 18.46 metres; a line

bearing 44 degrees 38 minutes for 6.4 metres; a line bearing 134 degrees 34 minutes for 47.17 metres; a line bearing 224 degrees 23 minutes 20 seconds for 6.355 metres; a line bearing 134 degrees 38 minutes for 16.7 metres; a line bearing 224 degrees 38 minutes for 3.195 metres; a line bearing 134 degrees 38 minutes for 30.305 metres; a line bearing 224 degrees 37 minutes 10 seconds for 14.405 metres to the point of commencement."

ENDNOTES

1 KEY

Key to abbreviations

amd = amended
app = appendix
bl = by-law
ch = Chapter
cl = clause
div = Division
exp = expires/expired
f = forms
Gaz = *Gazette*
hdg = heading
ins = inserted
lt = long title
nc = not commenced

od = order
om = omitted
pt = Part
r = regulation/rule
rem = remainder
renum = renumbered
rep = repealed
s = section
sch = Schedule
sdiv = Subdivision
SL = Subordinate Legislation
sub = substituted

2 LIST OF LEGISLATION

Legislative Assembly (Powers and Privileges) Regulations (SL No. 26, 2000)

Notified	1 June 2000
Commenced	r 3: 3 June 2000 (r 2(1)); r 4: 8 June 2000 (r 2(2))

Amendment of Legislative Assembly (Powers and Privileges) Regulations (SL No. 1, 2003)

Notified	12 February 2003
Commenced	12 February 2003

3 LIST OF AMENDMENTS

rr 5 – 6 ins No. 1, 2003